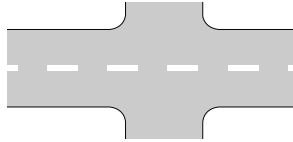


23. Road with right of way

A road marked with the “right of way” sign shown below or one for which the center line markings or vehicular lanes continue uninterrupted through the intersection.

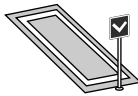


24. Safety zone

A raised area, or an area indicated by traffic signs and pavement markings, in the middle of the road for the purpose of ensuring the safety of passengers boarding or disembarking from streetcars, or pedestrians crossing the street.



Raised safety zone



Safety zone indicated by traffic signs and pavement markings

25. Vehicular lane

An area indicated by road markings as the part of the road designated for the passage of vehicles.

26. Exclusive lane

Part of the vehicular lane indicated by traffic signs and pavement markings as designated for the exclusive use of a particular type of vehicle.



27. Streetcar track

Part of the road required for the passage of streetcars, and consists of the area between the rails and an area 0.61 meters wide on either side of them.

28. Signal

Traffic signals are electrical lamps used to regulate the flow of traffic on roads.

29. Traffic sign

Signs are used to display regulations and other indications related to the flow of traffic on the roads.



30. Pavement marking

Pavement markings are lines, symbols, letters, etc., formed on the road using paint, rivets, or similar used to display regulations and other indications related to the flow of traffic on the roads.



31. Drive

The control of a vehicle or streetcar on the road (This includes cases where a motor vehicle or moped equipped with pedals is driven using only the pedals, not including the cases of specific automatic operation).

32. Specific automatic operation

Refers to operating an automobile using an automatic operation device necessary under conditions of use set beforehand. (Automatic operation device in this case is limited to one with a feature that can stop the automobile automatically and safely when the automobile is in bad state of repair or has deviated from conditions of use.)

33. Park

The situation where the vehicle is stopped continuously in order to wait for passengers or cargo, or to load or unload cargo or for other reasons such as breakdowns (not including cases where the vehicle is stopped in order to allow passengers to get in or out, or where the vehicle is stopped in order to load or unload cargo for five minutes or less), and to the situation where the vehicle is stopped and the driver has left the vehicle and is therefore unavailable to drive it. (not including cases where the vehicle is stopped during specific automatic operation.)

34. Stop

The situation where the vehicle is stopped but the term “park” does not apply.

35. Slow down

A speed at which it is possible to stop the vehicle immediately (in general, a speed at which the distance from the point where the brake is applied to the point where the vehicle stops is one meter or less, or a speed of 10 km/h or less).